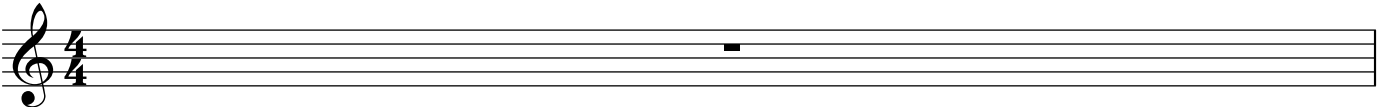


Alto Sax

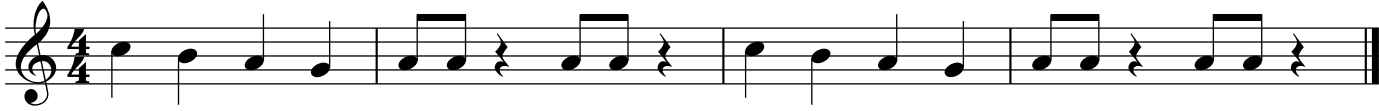
Band Songs 2015

♩ = 80

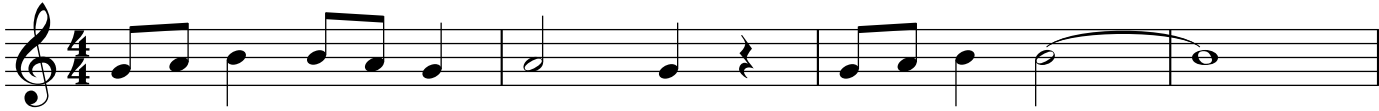


A musical staff with a treble clef and a 4/4 time signature. The staff is empty, with a single bar line at the end. A small black square is positioned on the second line of the staff.

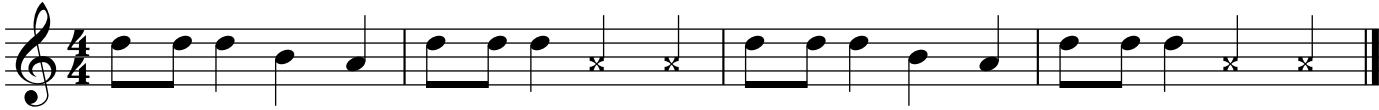
Alto Sax
BAND SONGS 2020
We Will Rock You



Peanuts (Charlie Brown Theme)



Here We Go!



Here we go Red Sox, Here we go! *stomp stomp* Here we go Red Sox, Here we go! *stomp stomp*

Let's Go Band



The Hey Song

Two staves of musical notation for 'The Hey Song' in 4/4 time, key of D major. The melody consists of a repeating pattern of quarter notes and eighth notes with rests, ending with a final quarter note and a double bar line.

Louie Louie

One staff of musical notation for 'Louie Louie' in 4/4 time, key of D major. The melody features a rhythmic pattern of eighth and quarter notes, ending with a double bar line.

Another One Bites the Dust

One staff of musical notation for 'Another One Bites the Dust' in 4/4 time, key of D major. The melody is characterized by a syncopated rhythm with eighth and quarter notes, ending with a double bar line.

Smoke On the Water

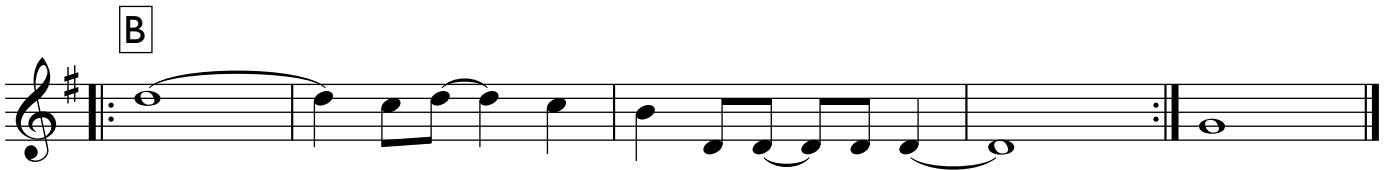
One staff of musical notation for 'Smoke On the Water' in 4/4 time, key of D major. The melody features a mix of quarter and eighth notes, ending with a double bar line.

Iron Man

One staff of musical notation for 'Iron Man' in 4/4 time, key of D major. The melody is a driving eighth-note pattern, ending with a double bar line.

Alto Sax

In the Jungle



Happy Birthday



My Country Tis' of Thee

Two staves of musical notation for the song 'My Country Tis' of Thee'. The first staff begins with a treble clef, a key signature of one sharp (F#), and a 3/4 time signature. The melody consists of quarter and eighth notes. The second staff continues the melody, ending with a double bar line.

America the Beautiful

Four staves of musical notation for the song 'America the Beautiful'. The first staff begins with a treble clef, a key signature of one sharp (F#), and a 4/4 time signature. The melody is written in a simple, accessible style using quarter and eighth notes. The fourth staff concludes the piece with a double bar line.

This Land is Your Land

Two staves of musical notation for the song 'This Land is Your Land'. The first staff begins with a treble clef and a common time signature (C). The melody features eighth notes and rests. The second staff continues the melody, ending with a double bar line.

Alto Sax

Bingo

Musical notation for the song "Bingo" for Alto Sax. The piece is in 2/4 time and G major. It consists of three staves of music. The first staff begins with a treble clef and a 2/4 time signature. The melody is simple and rhythmic, consisting of eighth and quarter notes. The second and third staves continue the melody, with the third staff ending with a double bar line.

Rock Around the Clock

Musical notation for the song "Rock Around the Clock" for Alto Sax. The piece is in common time (C) and G major. It consists of seven staves of music. The first staff begins with a treble clef and a common time signature. The melody is more complex than "Bingo", featuring eighth notes, quarter notes, and rests. The second and third staves continue the melody, with the third staff ending with a double bar line. The fourth and fifth staves continue the melody, with the fifth staff ending with a double bar line. The sixth and seventh staves continue the melody, with the seventh staff ending with a double bar line.

Flinstones Theme

Musical score for the Flinstones Theme, written for Alto Sax. The score consists of five staves of music in the key of D major (one sharp) and common time (C). The first four staves contain the main melody, which is a simple, rhythmic tune. The fifth staff concludes the piece with a final note and a double bar line, with the word "WILMA!" written above the staff.

Take Me Out to the Ball Game

Musical score for the song "Take Me Out to the Ball Game", written for Alto Sax. The score consists of four staves of music in the key of D major (one sharp) and 3/4 time. The melody is a simple, rhythmic tune that is easily recognizable. The score ends with a double bar line.

Alto Sax

Star Wars Theme

First staff of music in treble clef, key of D major (one sharp), and 4/4 time signature. It begins with a triplet of eighth notes (D4, E4, F#4) marked with a '3'. This is followed by a quarter note G4, a half note A4, and a quarter note B4. The next measure contains a triplet of eighth notes (B4, A4, G4) marked with a '3', followed by a quarter note F#4 and a half note E4. The final measure contains another triplet of eighth notes (E4, D4, C#4) marked with a '3', followed by a quarter note B4 and a half note A4.

Second staff of music in treble clef, key of D major, and 4/4 time signature. It begins with a quarter note G4, a half note A4, and a quarter note B4. The next measure contains a triplet of eighth notes (B4, A4, G4) marked with a '3', followed by a quarter note F#4 and a half note E4. The following measure contains another triplet of eighth notes (E4, D4, C#4) marked with a '3', followed by a quarter note B4 and a half note A4. The final measure contains a triplet of eighth notes (A4, G4, F#4) marked with a '3', followed by a quarter note E4 and a half note D4.

Third staff of music in treble clef, key of D major, and 4/4 time signature. It begins with a quarter note G4, a half note A4, and a quarter note B4. The next measure contains a triplet of eighth notes (B4, A4, G4) marked with a '3', followed by a quarter note F#4 and a half note E4. The following measure contains another triplet of eighth notes (E4, D4, C#4) marked with a '3', followed by a quarter note B4 and a half note A4. The final measure contains a triplet of eighth notes (A4, G4, F#4) marked with a '3', followed by a quarter note E4 and a half note D4.

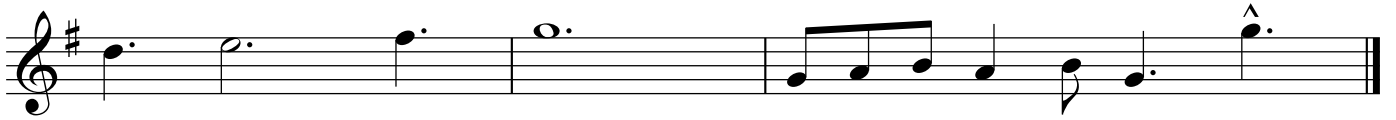
Fourth staff of music in treble clef, key of D major, and 4/4 time signature. It begins with a quarter note G4, a half note A4, and a quarter note B4. The next measure contains a triplet of eighth notes (B4, A4, G4) marked with a '3', followed by a quarter note F#4 and a half note E4. The following measure contains another triplet of eighth notes (E4, D4, C#4) marked with a '3', followed by a quarter note B4 and a half note A4. The final measure contains a triplet of eighth notes (A4, G4, F#4) marked with a '3', followed by a quarter note E4 and a half note D4.

Fifth staff of music in treble clef, key of D major, and 4/4 time signature. It begins with a quarter note G4, a half note A4, and a quarter note B4. The next measure contains a triplet of eighth notes (B4, A4, G4) marked with a '3', followed by a quarter note F#4 and a half note E4. The following measure contains another triplet of eighth notes (E4, D4, C#4) marked with a '3', followed by a quarter note B4 and a half note A4. The final measure contains a triplet of eighth notes (A4, G4, F#4) marked with a '3', followed by a quarter note E4 and a half note D4.

Sixth staff of music in treble clef, key of D major, and 4/4 time signature. It begins with a quarter note G4, a half note A4, and a quarter note B4. The next measure contains a triplet of eighth notes (B4, A4, G4) marked with a '3', followed by a quarter note F#4 and a half note E4. The following measure contains another triplet of eighth notes (E4, D4, C#4) marked with a '3', followed by a quarter note B4 and a half note A4. The final measure contains a triplet of eighth notes (A4, G4, F#4) marked with a '3', followed by a quarter note E4 and a half note D4, ending with a double bar line.

Alto Sax

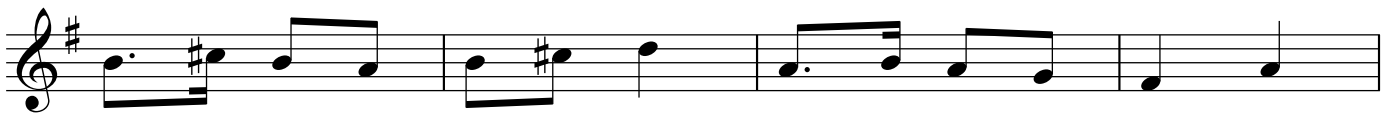
Spongebob Squarepants



Crazy Train



Yankee Doodle

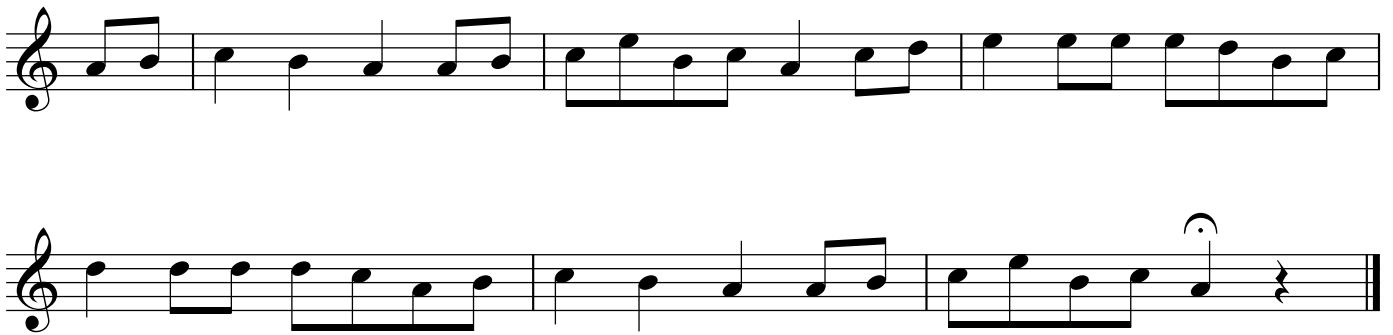


William Tell



Three staves of musical notation for the piece 'William Tell'. The first staff begins with a treble clef and a 4/4 time signature. The music consists of eighth and quarter notes, with a long slur over the final two notes of the third staff.

Snake Charmer



Two staves of musical notation for the piece 'Snake Charmer'. The music is written in a single treble clef and features a mix of eighth and quarter notes, ending with a fermata over the final note.

Row Your Boat



Two staves of musical notation for the piece 'Row Your Boat'. The first staff starts with a treble clef, a key signature of one sharp (F#), and a 6/8 time signature. The music is composed of quarter and eighth notes.