

Clarinet

Band Songs 2015

♩ = 80

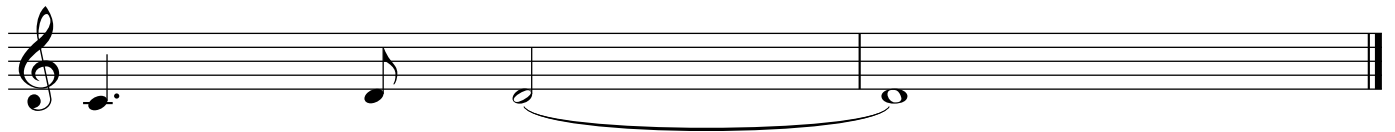
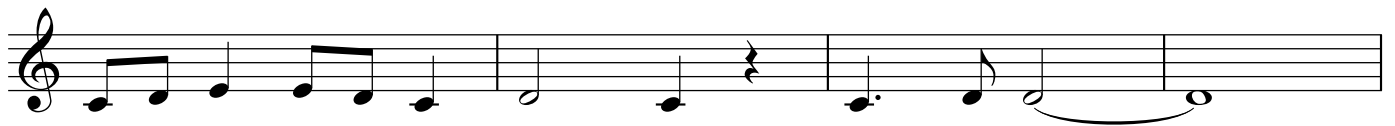
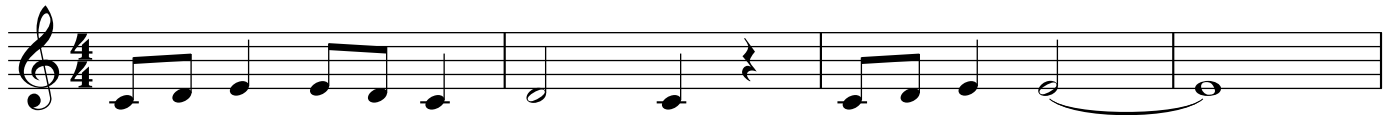


A musical staff with a treble clef and a 4/4 time signature. The staff is empty, with a single bar line at the end.

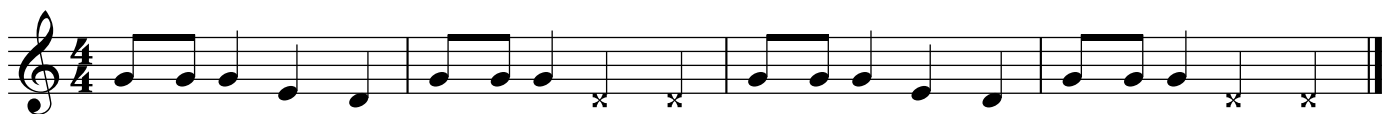
Clarinet
BAND SONGS 2020
We Will Rock You



Peanuts (Charlie Brown Theme)

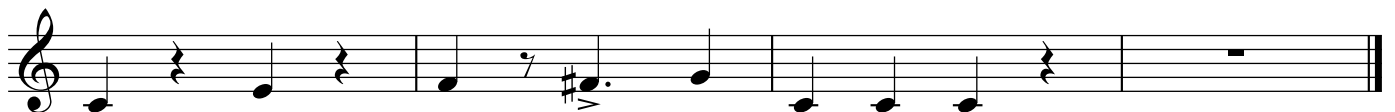


Here We Go!



Here we go Red Sox, Here we go! *stomp stomp* Here we go Red Sox, Here we go! *stomp stomp*

Let's Go Band



The Hey Song

Two staves of musical notation for 'The Hey Song' in 4/4 time. The first staff contains four measures: a quarter note G4, quarter note A4, quarter note B4, quarter rest; eighth note G4, eighth note A4, eighth note B4, eighth note C5; quarter note G4, quarter note A4, quarter rest; eighth note G4, eighth note A4, eighth note B4, eighth note C5. The second staff contains five measures: quarter note G4, quarter note A4, quarter rest; eighth note G4, eighth note A4, eighth note B4, eighth note C5; quarter note G4, quarter note A4, quarter rest; eighth note G4, eighth note A4, eighth note B4, eighth note C5; quarter note G4, quarter rest, quarter note G4.

Louie Louie

One staff of musical notation for 'Louie Louie' in 4/4 time. The staff contains eight measures: eighth note G4, eighth note A4, eighth note B4, eighth note C5; quarter note G4, quarter note A4, quarter note B4, quarter note C5; eighth note G4, eighth note A4, eighth note B4, eighth note C5; quarter note G4, quarter note A4, quarter note B4, quarter note C5; eighth note G4, eighth note A4, eighth note B4, eighth note C5; quarter note G4, quarter note A4, quarter note B4, quarter note C5; eighth note G4, eighth note A4, eighth note B4, eighth note C5; quarter note G4, quarter rest, quarter note G4.

Another One Bites the Dust

One staff of musical notation for 'Another One Bites the Dust' in 4/4 time. The staff contains four measures: quarter note G4, quarter note A4, quarter note B4, quarter rest; eighth note G4, eighth note A4, eighth note B4, eighth note C5; quarter note G4, quarter note A4, quarter note B4, quarter note C5; eighth note G4, eighth note A4, eighth note B4, eighth note C5.

Smoke On the Water

One staff of musical notation for 'Smoke On the Water' in 4/4 time. The staff contains four measures: quarter note G4, quarter note A4, quarter note B4, quarter note C5; eighth note G4, eighth note A4, eighth note B4, eighth note C5; quarter note G4, quarter note A4, quarter note B4, quarter note C5; eighth note G4, eighth note A4, eighth note B4, eighth note C5.

Iron Man

One staff of musical notation for 'Iron Man' in 4/4 time. The staff contains four measures: quarter note G4, quarter note A4, quarter note B4, quarter note C5; eighth note G4, eighth note A4, eighth note B4, eighth note C5; quarter note G4, quarter note A4, quarter note B4, quarter note C5; eighth note G4, eighth note A4, eighth note B4, eighth note C5.

Clarinet

In the Jungle



A

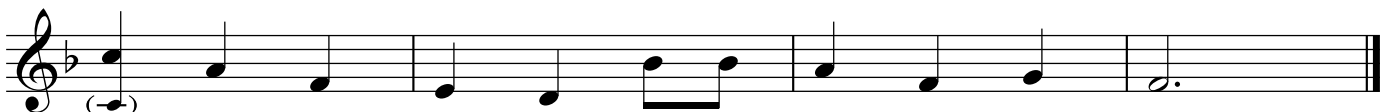


B



Happy Birthday

1



My Country Tis' of Thee

Musical notation for the first piece, 'My Country Tis' of Thee'. It consists of two staves. The first staff is in treble clef with a key signature of one flat (Bb) and a 3/4 time signature. The second staff is in treble clef with a key signature of one flat (Bb) and a 3/4 time signature, featuring a more complex rhythmic pattern with eighth and sixteenth notes.

America the Beautiful

Musical notation for the second piece, 'America the Beautiful'. It consists of four staves. The first staff is in treble clef with a key signature of one flat (Bb) and a 4/4 time signature. The second staff is in treble clef with a key signature of one flat (Bb) and a 4/4 time signature, featuring a more complex rhythmic pattern with eighth and sixteenth notes. The third and fourth staves are in treble clef with a key signature of one flat (Bb) and a 4/4 time signature, featuring a more complex rhythmic pattern with eighth and sixteenth notes.

This Land is Your Land

Musical notation for the third piece, 'This Land is Your Land'. It consists of two staves. The first staff is in treble clef with a key signature of one flat (Bb) and a common time signature (C). The second staff is in treble clef with a key signature of one flat (Bb) and a common time signature (C), featuring a more complex rhythmic pattern with eighth and sixteenth notes.

Clarinet

Bingo

Musical score for 'Bingo' in 2/4 time, key of B-flat major. The score consists of three staves of music. The first staff begins with a treble clef, a key signature of one flat (B-flat), and a 2/4 time signature. The melody is composed of eighth and quarter notes. The second and third staves continue the melody with similar rhythmic patterns.

Rock Around the Clock

Musical score for 'Rock Around the Clock' in common time (C), key of B-flat major. The score consists of seven staves of music. The first staff begins with a treble clef, a key signature of one flat (B-flat), and a common time signature. The melody is composed of eighth and quarter notes, with some rests. The second and third staves continue the melody with similar rhythmic patterns. The fourth and fifth staves feature more complex rhythmic patterns, including eighth and quarter notes with accents. The sixth and seventh staves conclude the piece with a final cadence, including a double bar line.

Flinstones Theme

Musical score for Flinstones Theme, consisting of five staves of music in treble clef and common time (C). The melody is characterized by eighth and quarter notes, with some rests. The fifth staff concludes with the word "WILMA!" written above the staff.

Take Me Out to the Ball Game

Musical score for Take Me Out to the Ball Game, consisting of four staves of music in treble clef and 3/4 time. The melody features dotted rhythms and rests. The first staff includes a (-) symbol under the first and fifth notes. The piece concludes with a double bar line.

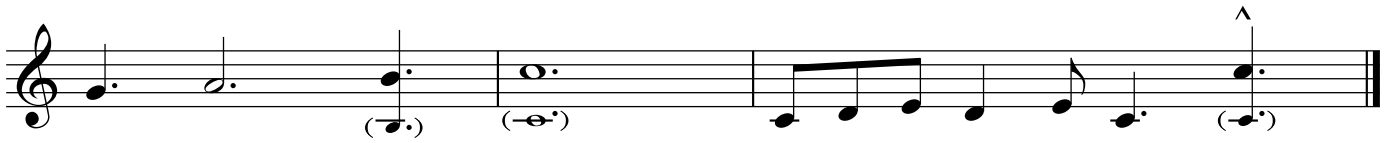
Clarinet

Star Wars Theme



Clarinet

Spongebob Squarepants



Clarinet

Crazy Train



Yankee Doodle

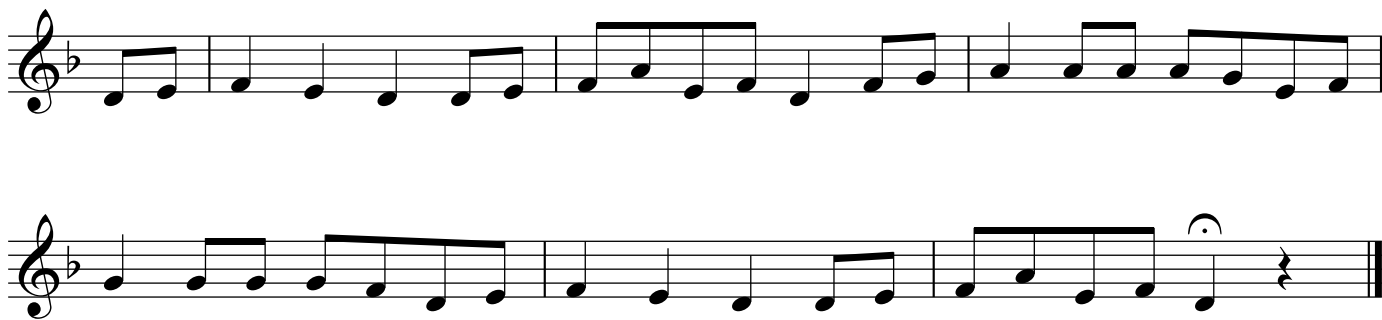


William Tell



Three staves of musical notation for the piece 'William Tell'. The first staff begins with a treble clef, a key signature of one flat (B-flat), and a 4/4 time signature. The melody consists of eighth and quarter notes. The second staff continues the melody with similar rhythmic patterns. The third staff features a long, sweeping melodic line with a slur over the first few notes, ending with a double bar line.

Snake Charmer



Two staves of musical notation for the piece 'Snake Charmer'. The first staff starts with a treble clef, a key signature of one flat, and a 4/4 time signature. The melody is composed of eighth and quarter notes. The second staff continues the piece, ending with a double bar line.

Row Your Boat



Two staves of musical notation for the piece 'Row Your Boat'. The first staff begins with a treble clef, a key signature of one flat, and a 6/8 time signature. The melody uses dotted rhythms. The second staff continues the melody, ending with a double bar line.