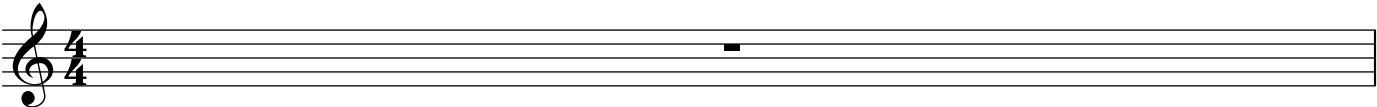


Horn in F

# Band Songs 2015

♩ = 80

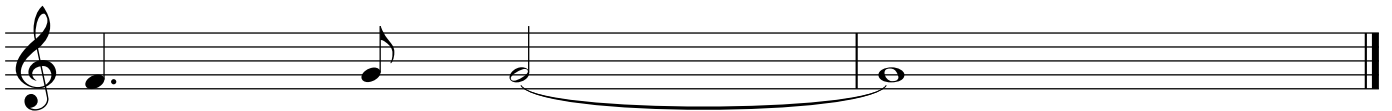


A musical staff with a treble clef and a 4/4 time signature. The staff is empty, with a single bar line at the end. A small black square is positioned on the second line of the staff.

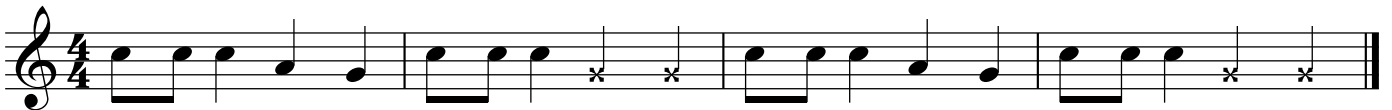
Horn in F  
**BAND SONGS 2020**  
We Will Rock You



**Peanuts (Charlie Brown Theme)**



**Here We Go!**



Here we go Red Sox, Here we go! *stomp stomp* Here we go Red Sox, Here we go! *stomp stomp*

**Let's Go Band**



### The Hey Song

Musical notation for 'The Hey Song' in 4/4 time, Horn in F. The piece consists of two staves. The first staff contains four measures: a dotted quarter note, an eighth note, a quarter note, and a quarter rest; a quarter rest, an eighth note, an eighth note, a quarter note, and a quarter note; a dotted quarter note, an eighth note, a quarter note, and a quarter rest; and a quarter rest, an eighth note, an eighth note, a quarter note, and a quarter note. The second staff contains five measures: a dotted quarter note, an eighth note, a quarter note, and a quarter rest; a quarter rest, an eighth note, an eighth note, a quarter note, and a quarter note; a dotted quarter note, an eighth note, a quarter note, and a quarter rest; a quarter rest, an eighth note, an eighth note, a quarter note, and a quarter note; and a quarter note, a quarter rest, and a whole rest.

### Louie Louie

Musical notation for 'Louie Louie' in 4/4 time, Horn in F. The piece consists of one staff with six measures: a quarter note, a quarter note, a quarter note, and a quarter rest; a quarter note, a quarter note, a quarter note, and a quarter rest; a quarter note, a quarter note, a quarter note, and a quarter rest; a quarter note, a quarter note, a quarter note, and a quarter rest; a quarter note, a quarter rest, and a whole rest; and a quarter note, a quarter rest, and a whole rest.

### Another One Bites the Dust

Musical notation for 'Another One Bites the Dust' in 4/4 time, Horn in F. The piece consists of one staff with four measures: a quarter note, a quarter note, a quarter note, and a quarter rest; a quarter note, a quarter note, a quarter note, and a quarter note; a quarter note, a quarter note, a quarter note, and a quarter rest; and a quarter note, a quarter note, a quarter note, and a quarter note.

### Smoke On the Water

Musical notation for 'Smoke On the Water' in 4/4 time, Horn in F. The piece consists of one staff with five measures: a quarter note, a quarter note, a quarter note, and a quarter note; a quarter rest, an eighth note, an eighth note, a quarter note, and a quarter note; a quarter note, a quarter note, a quarter note, and a quarter note; a quarter rest, an eighth note, an eighth note, a quarter note, and a quarter note; and a quarter note, a quarter note, and a whole note.

### Iron Man

Musical notation for 'Iron Man' in 4/4 time, Horn in F. The piece consists of one staff with four measures: a quarter note, a quarter note, a quarter note, and a quarter note; a quarter note, a quarter note, a quarter note, and a quarter note; a quarter note, a quarter note, a quarter note, and a quarter note; and a quarter note, a quarter note, a quarter note, and a quarter note.



### My Country Tis' of Thee

Two staves of musical notation for the piece 'My Country Tis' of Thee'. The first staff begins with a treble clef, a key signature of two flats (B-flat and E-flat), and a 3/4 time signature. The melody consists of quarter and eighth notes. The second staff continues the melody, ending with a double bar line.

### America the Beautiful

Five staves of musical notation for the piece 'America the Beautiful'. The first staff begins with a treble clef, a key signature of two flats (B-flat and E-flat), and a 4/4 time signature. The melody is primarily composed of quarter and half notes. The second staff contains a sharp sign (#) before the first note of the second measure. The fifth staff concludes the piece with a double bar line.

### This Land is Your Land

Two staves of musical notation for the piece 'This Land is Your Land'. The first staff begins with a treble clef, a key signature of two flats (B-flat and E-flat), and a common time (C) signature. The melody features eighth and quarter notes with frequent rests. The second staff continues the melody, ending with a double bar line.

Horn in F

### Bingo

Musical score for 'Bingo' in F major, 2/4 time. The score consists of three staves of music. The first staff begins with a treble clef, a key signature of one flat (F major), and a 2/4 time signature. The melody is composed of eighth and quarter notes. The second and third staves continue the melody with similar rhythmic patterns, ending with a double bar line.

### Rock Around the Clock

Musical score for 'Rock Around the Clock' in F major, common time (C). The score consists of seven staves of music. The first staff begins with a treble clef, a key signature of one flat (F major), and a common time signature. The melody is composed of eighth and quarter notes, with some rests. The second and third staves continue the melody with eighth notes and quarter notes. The fourth and fifth staves feature more complex rhythmic patterns, including eighth notes and quarter notes with accents. The sixth and seventh staves conclude the piece with a double bar line.

Horn in F

# Flinstones Theme

Musical score for the Flinstones Theme, Horn in F. The score consists of five staves of music in a 2/4 time signature. The first four staves contain the main melody, and the fifth staff concludes with the word "WILMA!" written above the staff.

# Take Me Out to the Ball Game

Musical score for the song "Take Me Out to the Ball Game", Horn in F. The score consists of four staves of music in a 3/4 time signature. The first staff contains the main melody, and the subsequent three staves provide harmonic accompaniment.

Horn in F

# Star Wars Theme





Horn in F

# Spongebob Squarepants

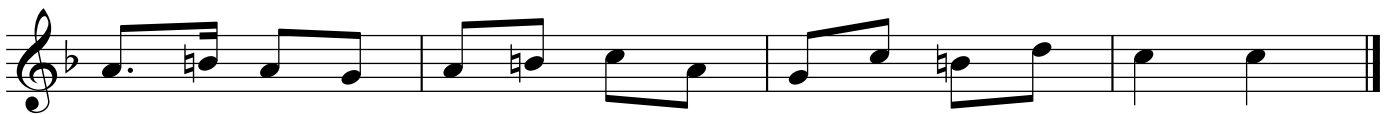
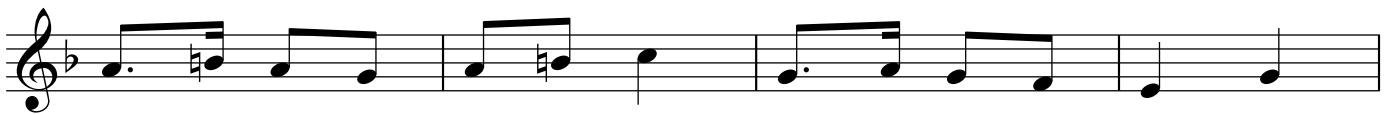


Horn in F

### Crazy Train



### Yankee Doodle



Horn in F

# William Tell



# Snake Charmer



# Row Your Boat

