

Trombone & Baritone

Band Songs 2015

♩ = 80

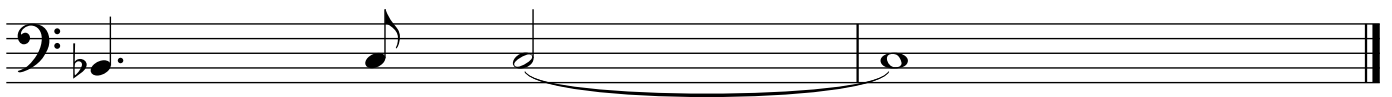
A single musical staff with a bass clef and a 4/4 time signature. The staff is mostly empty, with a single bar line visible near the end.

Trombone & Baritone
BAND SONGS 2020

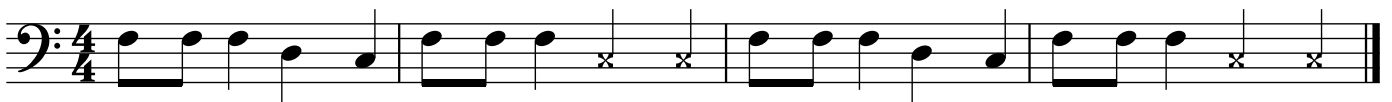
We Will Rock You



Peanuts (Charlie Brown Theme)



Here We Go!



Here we go Red Sox, Here we go! *stomp stomp* Here we go Red Sox, Here we go! *stomp stomp*

Let's Go Band



Trombone & Baritone

In the Jungle

1



My Country Tis' of Thee

Two staves of musical notation for the song 'My Country Tis' of Thee'. The first staff begins with a bass clef, a key signature of two flats (B-flat and E-flat), and a 3/4 time signature. The melody consists of quarter and half notes. The second staff continues the melody with similar note values and includes a double bar line at the end.

America the Beautiful

Five staves of musical notation for the song 'America the Beautiful'. The first staff begins with a bass clef, a key signature of two flats (B-flat and E-flat), and a 4/4 time signature. The melody is written in a simple, stepwise fashion using quarter and half notes. The fifth staff concludes the piece with a double bar line.

This Land is Your Land

Two staves of musical notation for the song 'This Land is Your Land'. The first staff begins with a bass clef, a key signature of two flats (B-flat and E-flat), and a common time (C) signature. The melody features eighth notes and rests. The second staff continues the melody and ends with a double bar line.

Trombone & Baritone

Bingo

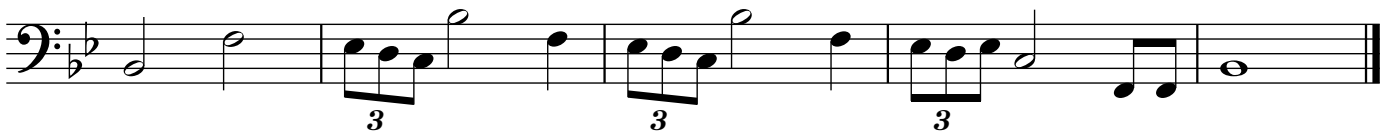
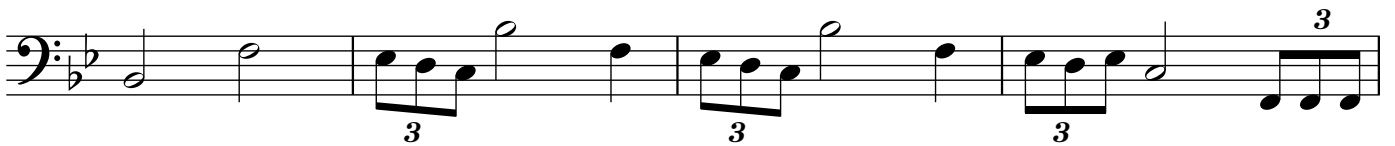
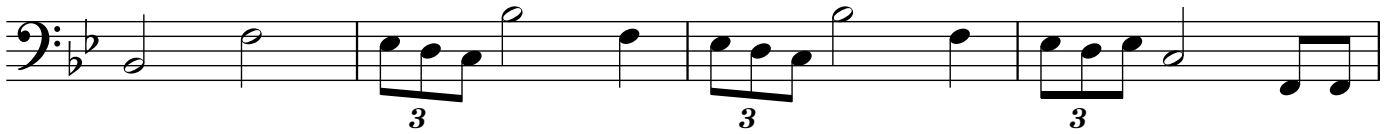
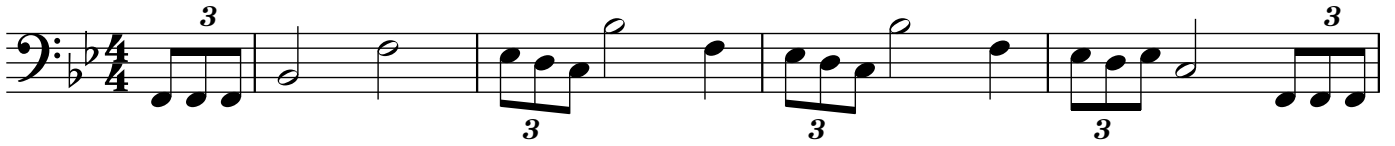
Musical score for 'Bingo' in bass clef, key of B-flat major (two flats), and 2/4 time signature. The score consists of three staves of music. The first staff begins with a quarter rest followed by a series of eighth and quarter notes. The second staff continues with eighth and quarter notes. The third staff concludes with a quarter note and a double bar line.

Rock Around the Clock

Musical score for 'Rock Around the Clock' in bass clef, key of B-flat major (two flats), and common time (C). The score consists of seven staves of music. The first staff starts with a quarter rest followed by eighth and quarter notes. The second staff features eighth notes and quarter notes with accents. The third staff includes quarter notes, eighth notes with accents, and quarter rests. The fourth staff continues with eighth notes, quarter notes with accents, and quarter rests. The fifth staff shows eighth notes, quarter notes with accents, and quarter rests. The sixth staff features eighth notes, quarter notes, and a half note with a slur. The seventh staff concludes with eighth notes, quarter notes, and a half note with a slur and a double bar line.

Trombone & Baritone

Star Wars Theme



Trombone & Baritone

Spongebob Squarepants



Crazy Train



Yankee Doodle



William Tell



Snake Charmer



Row Your Boat

