

Trumpet

# Band Songs 2015

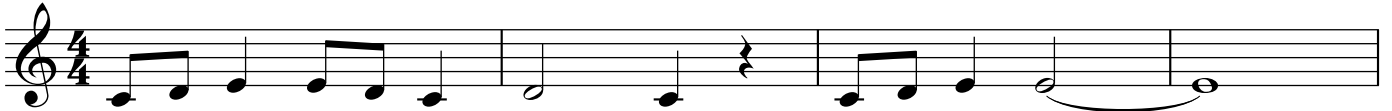
♩ = 80

A musical staff with a treble clef and a 4/4 time signature. A single note is written on the second line of the staff, which is the G4 note. The note is a quarter note.

Trumpet  
**BAND SONGS 2020**  
We Will Rock You



**Peanuts (Charlie Brown Theme)**



**Here We Go!**



Here we go Red Sox, Here we go! *stomp stomp* Here we go Red Sox, Here we go! *stomp stomp*

**Let's Go Band**



### The Hey Song

Musical notation for 'The Hey Song' in 4/4 time. The melody consists of two lines of music. The first line has four measures: a quarter note G4, quarter note A4, quarter note B4, and a quarter rest. The second measure has a triplet of eighth notes (C5, D5, E5) with a '7' above it, followed by quarter notes F5, G5, and A5. The third measure has a quarter note B4 and a quarter rest. The fourth measure has a triplet of eighth notes (C5, D5, E5) with a '7' above it, followed by quarter notes F5, G5, and A5. The second line also has four measures: a quarter note G4, quarter note A4, quarter note B4, and a quarter rest. The second measure has a triplet of eighth notes (C5, D5, E5) with a '7' above it, followed by quarter notes F5, G5, and A5. The third measure has a quarter note B4 and a quarter rest. The fourth measure has a quarter note G4, a quarter rest, and a double bar line.

### Louie Louie

Musical notation for 'Louie Louie' in 4/4 time. The melody consists of one line of music with five measures. The first four measures are identical: quarter notes G4, A4, B4, quarter rest; a triplet of eighth notes (C5, D5, E5) with a '7' above it, followed by quarter notes F5, G5, and A5; quarter notes B4, A4, G4, quarter rest; and a triplet of eighth notes (C5, D5, E5) with a '7' above it, followed by quarter notes F5, G5, and A5. The fifth measure has a quarter note G4, a quarter rest, and a double bar line.

### Another One Bites the Dust

Musical notation for 'Another One Bites the Dust' in 4/4 time. The melody consists of one line of music with four measures. The first measure has quarter notes G4, A4, B4, and a quarter rest. The second measure has eighth notes G4, A4, B4, eighth rest, quarter note G4, eighth notes A4, B4, eighth rest, quarter note G4. The third measure has quarter notes G4, A4, B4, and a quarter rest. The fourth measure has eighth notes G4, A4, B4, eighth rest, quarter note G4, eighth notes A4, B4, eighth rest, quarter note G4. The piece ends with a double bar line.

### Smoke On the Water

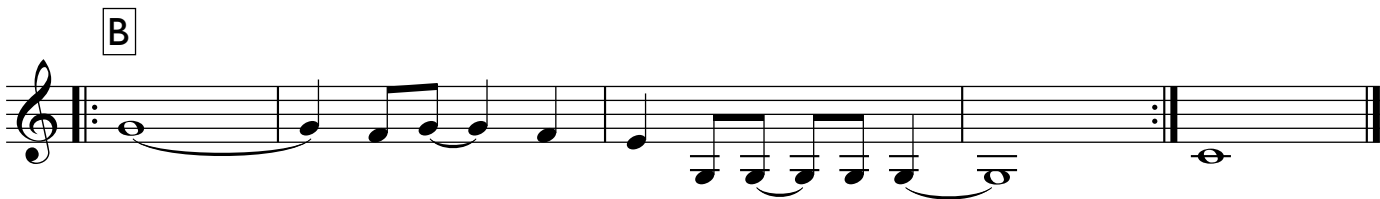
Musical notation for 'Smoke On the Water' in 4/4 time. The melody consists of one line of music with five measures. The first measure has quarter notes G4, A4, B4, quarter rest. The second measure has a quarter note G4, a triplet of eighth notes (A4, B4, C5) with a '7' above it, a quarter note B4, and a half note G4. The third measure has quarter notes G4, A4, B4, quarter rest. The fourth measure has quarter notes G4, A4, B4, quarter rest. The fifth measure has a quarter note G4, a quarter rest, and a double bar line.

### Iron Man

Musical notation for 'Iron Man' in 4/4 time. The melody consists of one line of music with four measures. The first measure has quarter notes G4, A4, B4, quarter rest. The second measure has eighth notes G4, A4, B4, eighth rest, quarter note G4, eighth notes A4, B4, eighth rest, quarter note G4. The third measure has quarter notes G4, A4, B4, quarter rest. The fourth measure has eighth notes G4, A4, B4, eighth rest, quarter note G4, eighth notes A4, B4, eighth rest, quarter note G4. The piece ends with a double bar line.

Trumpet

# In the Jungle



# Happy Birthday



### My Country Tis' of Thee

Musical notation for the first piece, 'My Country Tis' of Thee'. It consists of two staves of music in 3/4 time, featuring a key signature of one flat (Bb). The melody is written on a treble clef staff.

### America the Beautiful

Musical notation for the second piece, 'America the Beautiful'. It consists of six staves of music in 4/4 time, featuring a key signature of one flat (Bb). The melody is written on a treble clef staff.

### This Land is Your Land

Musical notation for the third piece, 'This Land is Your Land'. It consists of two staves of music in common time (C), featuring a key signature of one flat (Bb). The melody is written on a treble clef staff.

Trumpet

## Bingo

Musical score for 'Bingo' in 2/4 time, key of B-flat major. The score consists of three staves of music. The first staff begins with a treble clef, a key signature of one flat (B-flat), and a 2/4 time signature. The melody is composed of eighth and quarter notes. The second and third staves continue the melody with similar rhythmic patterns, ending with a double bar line.

## Rock Around the Clock

Musical score for 'Rock Around the Clock' in common time (C), key of B-flat major. The score consists of seven staves of music. The first staff begins with a treble clef, a key signature of one flat (B-flat), and a common time signature. The melody is composed of quarter and eighth notes, with some rests. The second and third staves continue the melody with eighth notes and quarter notes. The fourth and fifth staves feature more complex rhythmic patterns, including eighth notes and quarter notes with accents. The sixth and seventh staves conclude the piece with a final melodic phrase and a double bar line.

### Flinstones Theme

Musical score for the Flinstones Theme, Trumpet part. The score consists of five staves of music in common time (C). The first four staves contain the main melody, which is a simple, rhythmic tune. The fifth staff begins with the melody and ends with a double bar line, followed by the word "WILMA!" written above the staff, indicating a call to Wilma.

### Take Me Out to the Ball Game

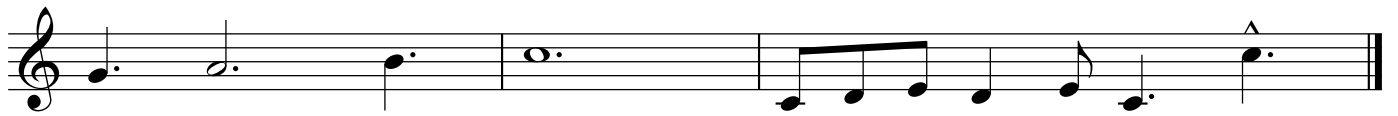
Musical score for "Take Me Out to the Ball Game", Trumpet part. The score consists of four staves of music in 3/4 time. The melody is a simple, rhythmic tune that is easily recognizable. The score ends with a double bar line.





Trumpet

# Spongebob Squarepants



Trumpet

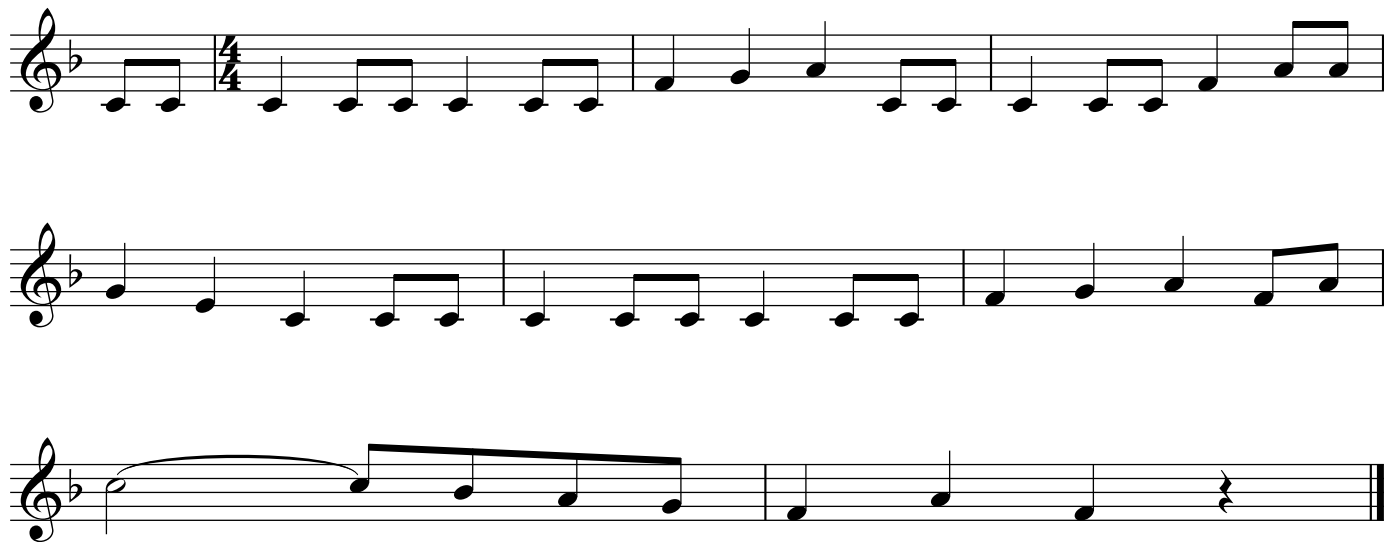
### Crazy Train



### Yankee Doodle

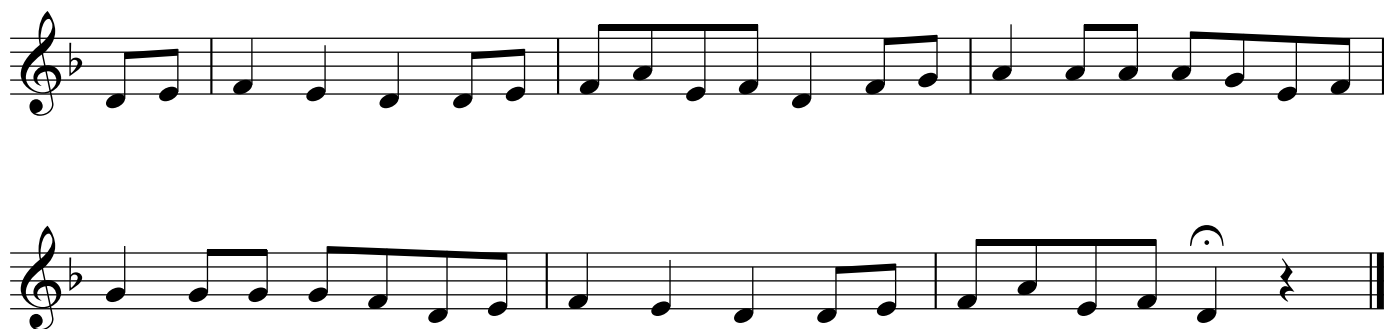


### William Tell



Three staves of musical notation for the piece 'William Tell'. The first staff begins with a treble clef, a key signature of one flat (B-flat), and a 4/4 time signature. The melody consists of eighth and quarter notes. The second staff continues the melody with similar rhythmic patterns. The third staff features a long, sweeping melodic line that descends across the staff, ending with a fermata and a double bar line.

### Snake Charmer



Two staves of musical notation for the piece 'Snake Charmer'. The first staff starts with a treble clef, a key signature of one flat (B-flat), and a 4/4 time signature. The melody is composed of eighth and quarter notes. The second staff continues the piece, ending with a fermata and a double bar line.

### Row Your Boat



Two staves of musical notation for the piece 'Row Your Boat'. The first staff begins with a treble clef, a key signature of one flat (B-flat), and a 6/8 time signature. The melody is primarily composed of quarter and eighth notes. The second staff continues the melody, ending with a fermata and a double bar line.